



Re-turn

## Ireland's Deposit Return Scheme

# What you need to know

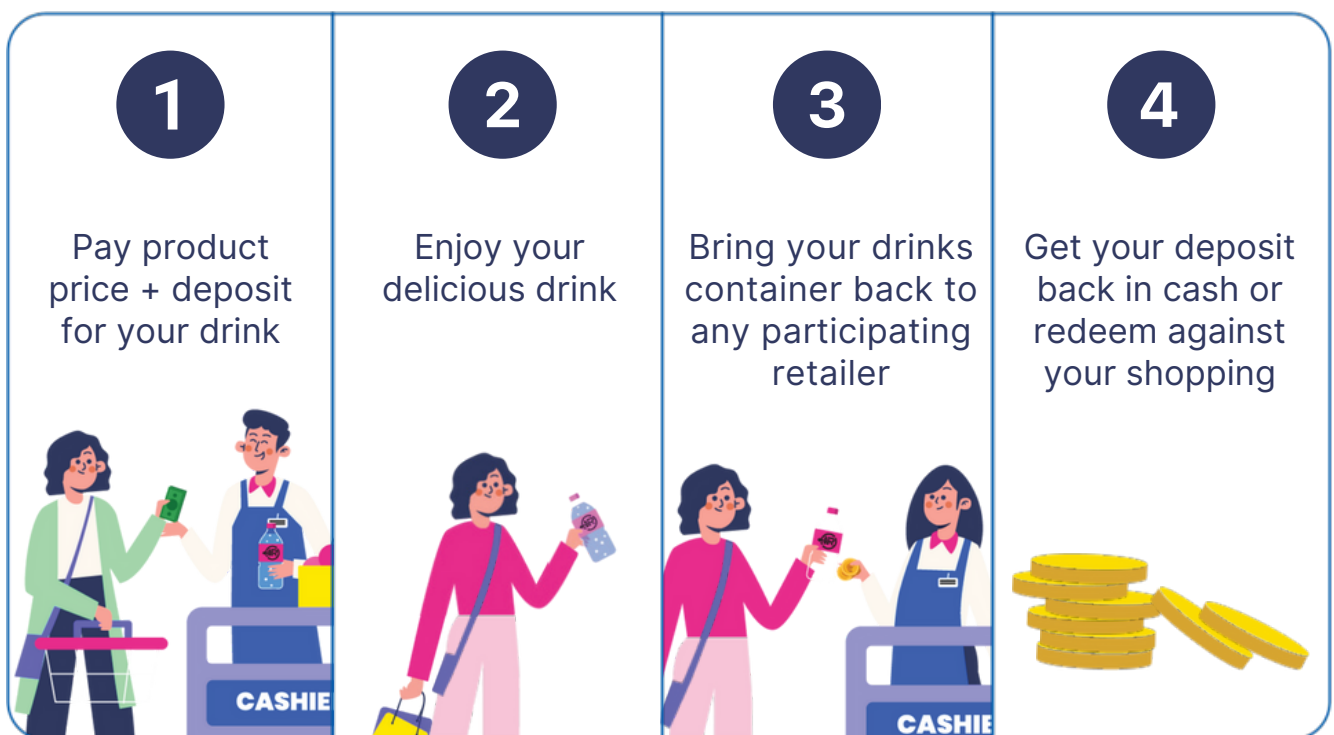


# Introducing Ireland's Deposit Return Scheme

From 1 February 2024, when you buy a drink in a plastic bottle, aluminium or steel can that features the Re-turn logo, you pay a small refundable deposit in addition to the price of the drink. When you're finished, simply bring back your empty, undamaged drinks container to any participating shop or supermarket nationwide to get your full deposit refund.

To prevent waste, for a limited period, from 1 February there will be some stock of plastic bottles and cans that may not feature the Re-turn logo. Should consumers be charged a deposit on these drinks containers, please be assured that you will get your deposit back when you return to RVM Deposit Return Points nationwide.

## How it works





## How to return

Containers can be returned to any participating retailer regardless of where they are purchased. If through a reverse vending machine, consumers will be issued a voucher that can be redeemed at the till against store purchases or as a cash refund. If over the counter, retailers will check the drinks container features the Re-turn logo and is undamaged and then provide a refund. If a consumer is in any doubt about whether their container is eligible for a deposit refund, they can visit <https://re-turn.ie/consumer/#barcodeChecker> to verify.

Please visit [re-turn.ie/#wheretoreturn](https://re-turn.ie/#wheretoreturn) or scan the QR code to view our Deposit Return Point map which details participating shops and supermarkets nationwide.



## What to return

If your plastic bottle or can features the Re-turn logo then it means a deposit is applied – to redeem it simply return your drinks container to any participating retailer.

You can only return drinks containers that are **EMPTY** and **UNDAMAGED**.

To prevent waste, for a limited period, from 1 February there will be some stock of plastic bottles and cans that may not feature the Re-turn logo. Should consumers be charged a deposit on these drinks containers, please be assured that you will get your deposit back when you return to RVM Deposit Return Points nationwide.



**Glass**



**Dairy products**

## What not to return

Not all drinks containers are eligible for Deposit Return. Glass bottles and drinks with any dairy content are not included in the Scheme.

## Deposit values



**150ml - 500ml = 15c**



**Over 500ml - 3L = 25c**

# Frequent questions

## **Why is there a Deposit Return Scheme being introduced into Ireland?**

We currently recycle approximately 60% of drinks containers and Deposit Return is a proven method of increasing recycling rates, with great success in a number of other European countries. Under the EU Single Use Plastic (SUP) directive, Ireland must ensure the separate collection of 77% of plastic beverage bottles by 2025, rising to 90% by 2029.

## **Can I return drinks containers bought before 1 February?**

No – consumers should not store drinks containers bought before 1 February as these plastic bottles and cans are not part of the Scheme. Remember to look out for the Re-turn logo and if you don't pay a deposit, you are ineligible for any deposit refund as no deposit has been paid.

## **Do I have a choice on how my deposit is refunded?**

Yes, you have the option to get your deposit refunded in cash or against store purchase.

## **Why is glass not included?**

Currently there is no requirement for glass to be included in the Scheme as Ireland has a recycling rate of over 80% for glass and is surpassing recycling targets for this material.

## **I already recycle through my Recycling bin, why is this being brought in?**

While all consumers should use their recycling bins for mixed dry recyclables, we would ask that consumers return their plastic bottles and cans to participating shops and supermarkets to redeem their deposit. The separate collection of these plastic bottles and cans guarantees a high quality recyclate material is returned and recycled and there is no cross contamination. The introduction of Deposit Return is a proven method of increasing recycling rates, with great success in a number of other European countries.

# Frequent questions cont'd

## Is this an extra cost?

No, as the deposit is fully refundable when the empty undamaged drinks containers are returned to participating shops and supermarkets nationwide. The only people that will lose out are the ones who do not return their drinks containers to participating shops and supermarkets nationwide.

## Can I redeem the voucher I receive from a Reverse Vending Machine (RVM) in any store?

No. Empty and undamaged drinks containers may be returned to any participating store nationwide, but the voucher issued from a store's Reverse Vending Machine (RVM) must be redeemed in that specific store.

## My drinks container did not have a Re-turn logo on it, why was I still charged a deposit?

Should consumers be charged a deposit on a drinks container, please be assured that you will get your deposit back when you return it empty and undamaged to Reverse Vending Machine Deposit Return Points nationwide.

Starting February 1, 2024, retailers have a 4-month transition period during which they can sell both new drinks containers with the Re-turn logo and older drinks containers that do not feature this logo. During this time, drinks containers can incur a deposit in two ways:

- By having the Re-turn logo with a registered barcode
- By having a barcode that is registered as part of the scheme without the Re-turn logo.

During the transition period, there will be old drink containers without a logo and with barcode not registered with the scheme; these drinks containers will not incur a deposit charge.

From June 1, all drinks containers included in the scheme will feature the Re-turn logo and barcode.

# Frequent questions cont'd

## Is this a government scheme?

No, Re-turn (DRSI CLG) is a not for profit company limited by guarantee and was formed by producers and retailers in order to fulfil their obligations under the Separate Collection (Deposit Return Scheme) Regulations 2021.

## I bought my drinks online, do I pay a deposit, and how do I return them?

All drinks containers featuring the Re-turn logo will have a deposit that is fully refundable when returned empty and undamaged to participating shops and supermarkets nationwide. Your receipt from the online retailer will display a QR code and the Re-turn website URL so you can access a map of all Deposit Return points nationwide.

## Why do the containers have to be undamaged?

When returning drinks containers through a Reverse Vending Machine (RVM), the containers have to be in good condition as the machines scans the shape of the container as well as the barcode to ensure validity.

## Are multipacks part of this scheme?

All new multi-packs with the Re-turn logo will now feature barcodes on each container and will be subject to a deposit which is fully refunded when each container is returned. Older multipacks without the logo or barcode will not have a deposit charge.

## Do I need the bottle cap for the bottle to return it?

The bottle can be returned with or without the bottle cap. In the interest of recycling, it is preferred that the bottle be returned with the cap.

For more information contact us at [info@re-turn.ie](mailto:info@re-turn.ie)

